



GTM GERMANY | GLOBAL DATA CENTERS EMEA

Munich 1 Data Center

Highly redundant cooling systems

Site brochure



Home to the Cloud

Munich is the third-largest city in Germany and the capital and most populous city of the German federal state Bavaria. The city has the strongest economy out of all the German cities and has a significant financial center. As a result, it places itself as a solid, regional alternative to Frankfurt. It holds the headquarters of large companies such as Siemens, BMW, Allianz, MAN, Linde and MunichRE. Munich also boasts an important technology hub, with a presence of many large tech businesses such as Microsoft, Google, Amazon, IBM

and Alibaba. The city is known as one of Germany's innovation hotspots with a large number of start-ups based in the city. There is a focus on the automotive industry, as this is a particularly vibrant industry within Munich.

The Munich 1 Data Center offers 1,960 sqm of high available data center space and 300 sqm of office space. It's one of our three smaller data centers, which fulfils all the requirements of high availability.

A solution for every requirement

With a total of 1,960 sqm IT space and a maximum IT load of 1.2 MW, Munich 1 offers complete solutions for housing your IT and network systems in a secure, high availability environment. We provide you with the best possible physical and technical infrastructure supported by n+1 UPS systems, generator backup, as well as highly redundant cooling systems. Munich 1 holds multiple certifications such as DIN EN ISO 9001 and is connected to major carrier hubs and cloud networks. To validate hybrid cloud services and innovations faster and at lower cost, our Technology Experience Labs provide the perfect hosted ecosystem in a live data center environment.

Secure and flexible space built to your specifications

Your requirements are the most important aspect of our service offering. You choose, we deliver. Whether you select a building shell which you configure yourself, or we construct it according to your specifications, or even if you want to rent a single rack in our shared environment, we can accommodate your needs. We will also ensure the space is highly available through our years of engineering critical data centers while maintaining high levels of security to keep your infrastructure and data safe.

Location



Infrastructure

Data center space

- 1,960 sqm of IT space
- flexible colocation deployments: single rack colocation, cages and suites
- ancillary spaces (offices, storages, and pre-installation rooms) available
- common areas such as meeting rooms, catering area, and showers

Cooling

- redundant water-cooled system supported by free-cooling (n+1)
- cold air supply from »bottom to top« via raised floor
- star-shaped chilled water pipes to CRAH units with redundant pumps
- pipe routes run outside the data center space in the maintenance corridors, which are protected by tubs and equipped with leak detection

Power

- on-site substation delivering 3 MVA of power
- maximum client IT load of 1.2 MW
- average power density of 1.0 kW/sqm
- own medium-voltage feed from the European grid via local power supplier (3 x 1,000 kVA transformer station)
- UPS n+1 redundant bridging time minimum 15 minutes battery at full load
- emergency generators (2 x 1,400 kVA) fuel storage for 48 hours

Fire protection

- monitoring with automatic digital fire alarm system
- smoke detection early warning system (VESDA) in the return air path
- mobile gas extinguishing systems and hand-held fire extinguishers for first firefighting actions
- fire protection walls with fire resistance 90 minutes

Security

- Service Operation Center for security and operation with 24/7 fallback to Frankfurt 1
- redundant monitoring of all critical functions underpinned by standardized security

Overview of our main product offerings:

Fully-fitted	Colocation rack
	Carrier rack
	Cage
Supporting products and services	Suite
	Multi service interconnection platform
	Cross connects
	Remote-hands

- video surveillance systems for the external building facade and internal areas
- card swipe entry/exit to all doors and persons separation locks per data center building
- preventive risk assessment as well as continuous testing and training of operating personnel

Connectivity

- carrier-neutral
- carrier mix from global tier 1 supplier to regional supplier
- connectivity to the major carrier hubs
- pre-spliced dark fiber available on demand
- redundant cabling infrastructure with diverse paths
- high-performance internet access
- inter data center connectivity between NTT data centers for geo-redundant solutions
- multi cloud interconnection platform to connect our clients to major cloud service providers such as Amazon Web Services, Microsoft Azure, and Google Cloud Platform

Additional services

- client implementation
- installation services
- remote-hands services provided by the technical infrastructure on-call service
- facility services

Global data center network

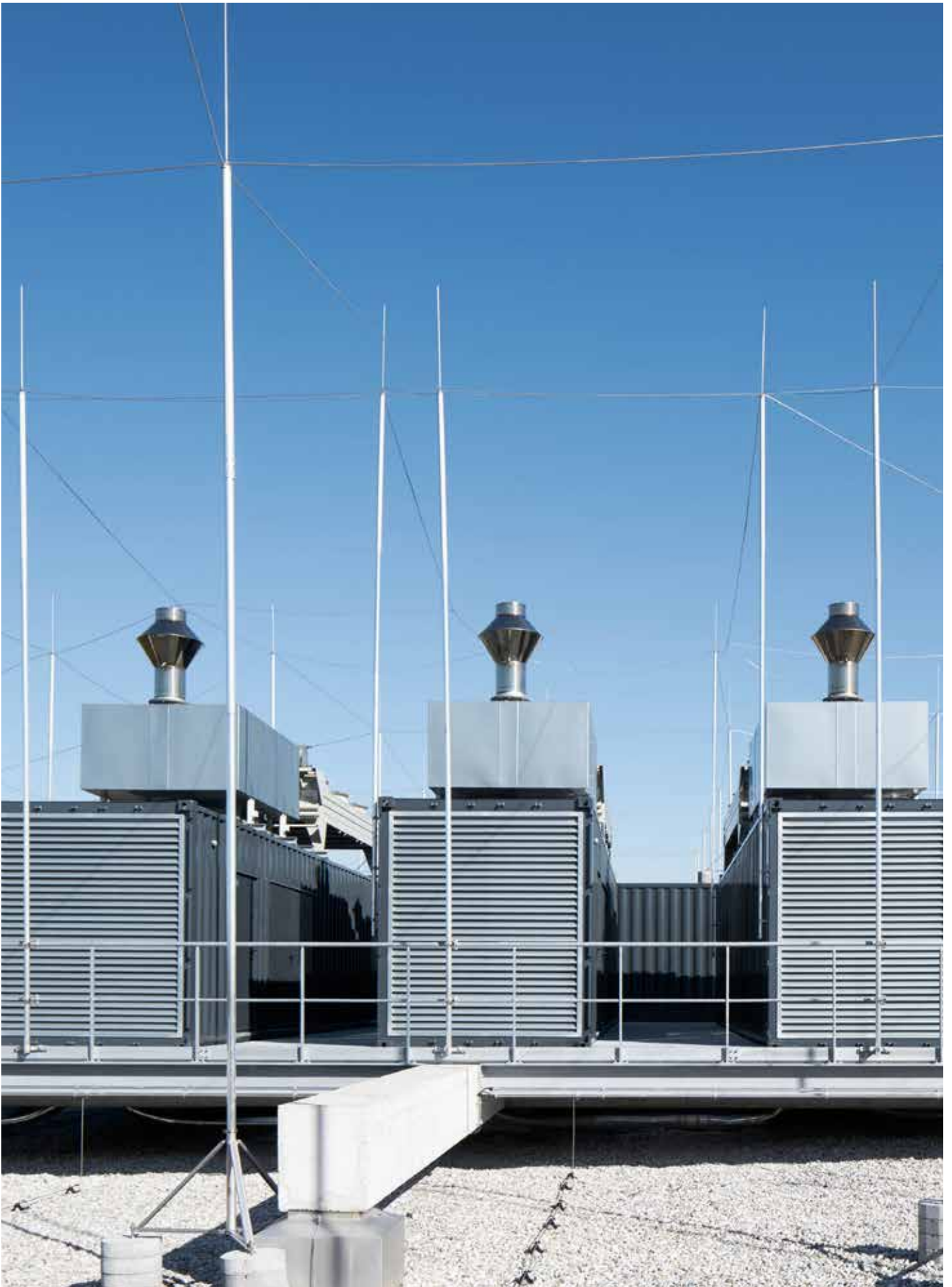
- part of the NTT family of over 160 data centers around the world
- connectivity options to the global NTT network
- access and use of Technology Experience Labs with a worldwide partner network

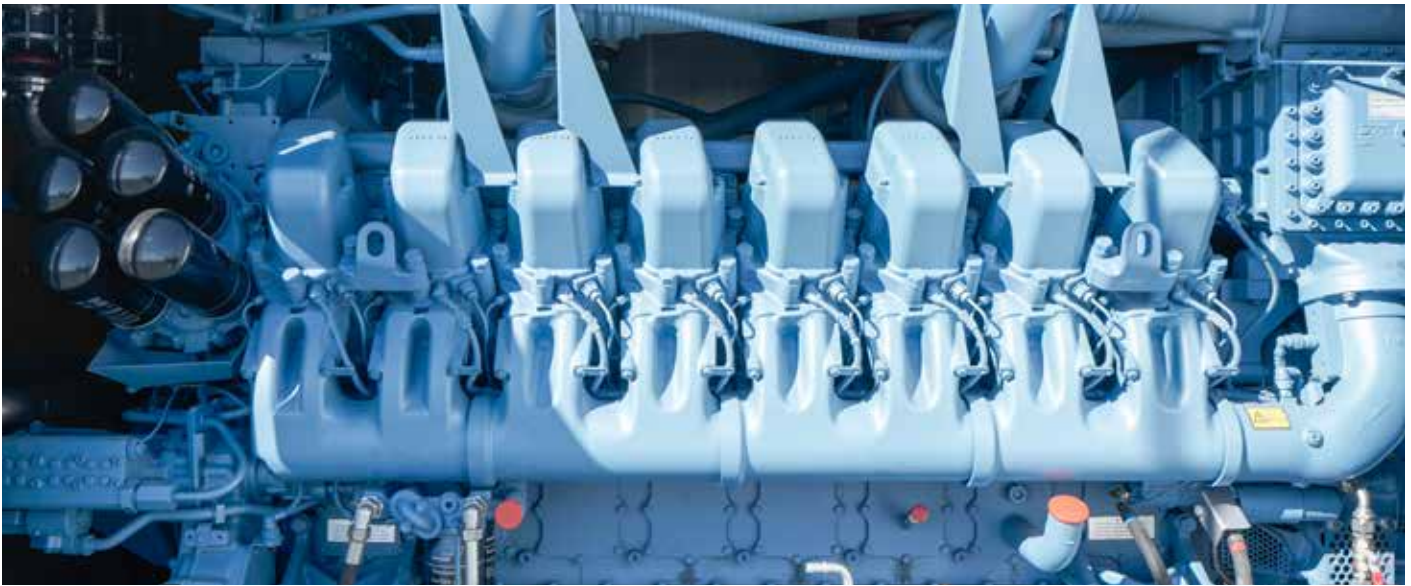
Service Level Agreement

- 99.95% power uptime availability
- connectivity availability

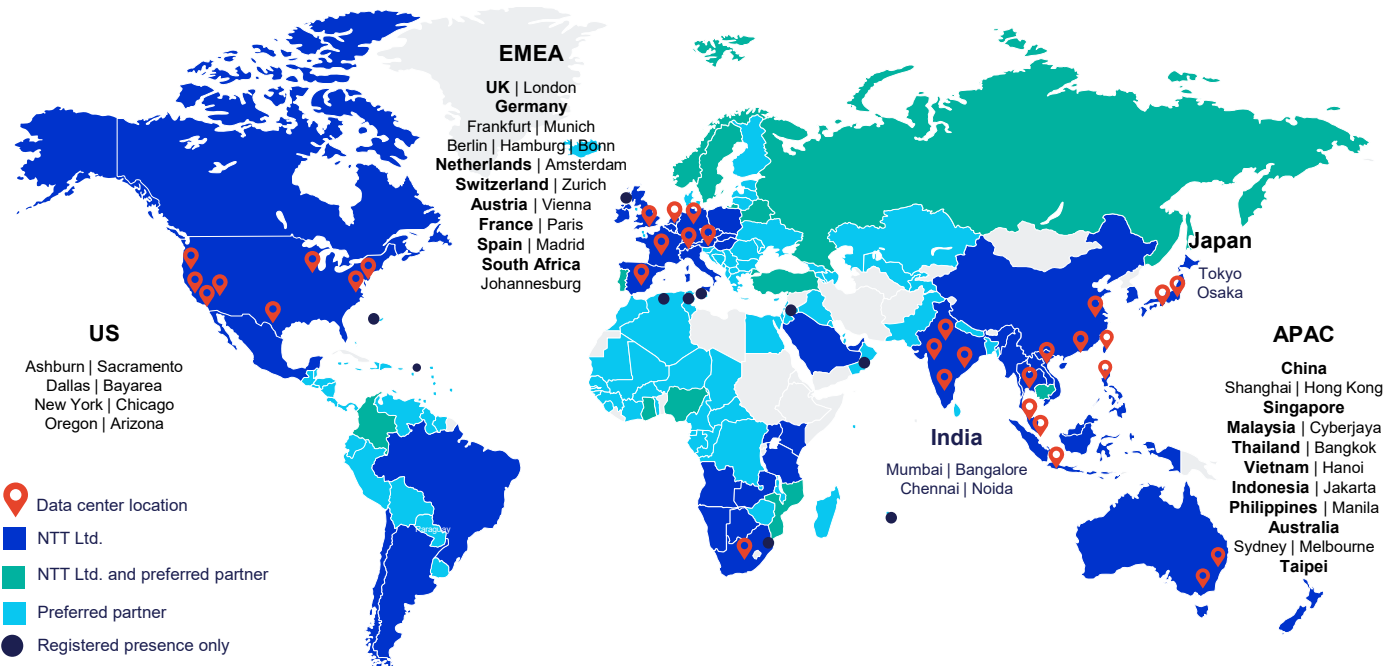
Technology Experience Lab

- **Technology spaces:** Globally available facilities in productive data centers of NTT that bring together more than 140 technology partners to enable prospects and clients to test and validate, but also innovate on the latest technologies.
- **Industry communities:** Today, information technologies are a key enabler to many organizations. Our industry communities help these organizations to identify relevant technology providers and connect with helpful contacts.
- **Start-ups and Venture Capital:** Many times, start-ups are major drivers when it comes to disrupting various industries. Our start-up unit brings together start-ups, corporates and venture capitalists to enable and accelerate innovation.





Flexible connection to data centers and clouds: 20+ countries and 450,000 sqm server space



About the Global Data Centers division of NTT Ltd.

Global Data Centers is a division of NTT Ltd. and incorporates DPA, e-shelter, Gyron, NetMagic, NTT Indonesia Nexcenter, RagingWire and other NTT Communications group Data Center divisions. Our combined global platform is one of the largest in the world, with over 160 data centers spanning more than 20 countries and regions including North America, Europe, Africa and APAC. As a neutral operator, we offer access to multiple cloud providers, a large variety of Internet Exchanges and telecommunication network providers including our own IPv6 compliant, tier 1 global IP network. Our clients benefit from tailored infrastructure and experience consistent best practices in design and operations across all of our highly reliable, scalable, and customizable data centers.

NTT Ltd. is a global technology services company bringing together the expertise of 31 brands, including NTT Communications, Dimension Data, and NTT Security. We partner with organizations around the world to shape and achieve outcomes through intelligent technology solutions. For us, intelligent means data-driven, connected, digital, and secure. As a global ICT provider, we employ more than 40,000 people in a diverse and dynamic workplace, and deliver services in over 200 countries and regions. Together we enable the connected future. Visit us at our new website **hello.global.ntt**

NTT in numbers and facts



Expertise

We help you to do great things.



Over **40,000**
people are working for
NTT Ltd. worldwide



Delivering services
in more than
200 countries



300,000
people are part of the
NTT Group



Technology solution

We have a full suite of technology
solutions to help you create value.



Partner

We work together with you.
We're an extension for your business.



Intelligent

For us, intelligent means helping you to be data driven, connected, digital, and secure.



5

regions



Globally

We are wherever you are, making it easier for you to focus on your core business.



120

years of heritage in the NTT Group



Outcomes

We shape the outcomes you're looking for.



Contact

Munich 1 Data Center
NTT Global Data Centers EMEA GmbH
Ammerthalstraße 10
85551 Kirchheim-Heimstetten
Germany

datacenter.hello.global.ntt