



EMEA

# Zurich 1 Data Center

Zurich is the largest city in Switzerland and **the Swiss Stock Exchange**, one of the world's most prominent stock exchanges, is located there. **Many of Switzerland's largest companies** are headquartered in Zurich.

## Data center space

- 11,000 m<sup>2</sup> of IT space
- flexible colocation configurations: single colocation racks, cages, suites and entire building components
- ancillary areas such as social, office, storage and pre-installation rooms
- common areas such as conference rooms and catering area

## Power

- total power: 30 MVA
- IT load: 20 MW
- average power density of 1.5 – 2.5 kW/m<sup>2</sup>
- power supply at 16 kV medium voltage level
- separate, dual UPS systems (A- and B-supply) with 2N redundancy
- redundantly designed emergency power system with diesel generators N+1

## Cooling

- high efficient chiller systems with free-cooling integrated or separated coolers and own-programmed, weather-dependent energy management systems

- CRAH units
- peripheral humidifying and dehumidifying systems with low energy
- expenditure managing the humidity of IT areas
- cooling and cold water loops with redundant pumps
- heat recovery with heating pumps

## Fire protection

- automatic digital fire alarm system on all levels
- Very Early Smoke Detection Alarm Systems (VESDA)
- firefighting system based on an argon or nitrogen extinguishing gas system
- fire protection walls to a minimum of 90 minutes separation

## Security

- 24/7 Security Operations Center and Operation Control Center
- palisade fencing
- video surveillance systems for the external perimeter, plant areas, and data halls

- card swipe entry/exit to all doors
- preventive risk assessment

## Connectivity

- carrier- and cloud-neutral
- Carrier-Access-Rooms
- Carrier-Meet-Me-Rooms
- carrier mix
- connectivity and dark fiber infrastructure
- redundant cabling infrastructure
- Pre-Cabling
- high-performance internet access
- inter data center connectivity between NTT data centers
- Multi Service Interconnection Platform

## Additional services

- client implementation
- installation services
- 24/7 Remote Hands services
- facility services
- additional security services

### Certifications

- TIA 942, part G, tier 3
- ISO 27001
- DIN EN ISO 9001
- DIN EN 50001
- PCI-DSS
- ISAE 3402 & 3000



### Global data center network

- part of the NTT family
- connectivity options to the global NTT network
- access and use of Technology Experience Labs

### Service Level Agreement

- 99.999% power uptime availability
- climate control conditions in line with ASHRAE guidelines
- connectivity availability

### Technology Experience Lab

- **Technology spaces:** Globally available facilities in productive data centers of NTT that bring together more than 140 technology partners to enable prospects and clients to test and validate, but also innovate on the latest technologies.
- **Industry communities:** Today, information technologies are a key enabler to many organizations. Our industry communities help these organizations to identify relevant technology providers and connect with helpful contacts.
- **Start-ups and venture capital:** Many times, start-ups are major drivers when it comes to disrupting various industries. Our start-up unit brings together start-ups, corporates and venture capitalists to enable and accelerate innovation.

### Location



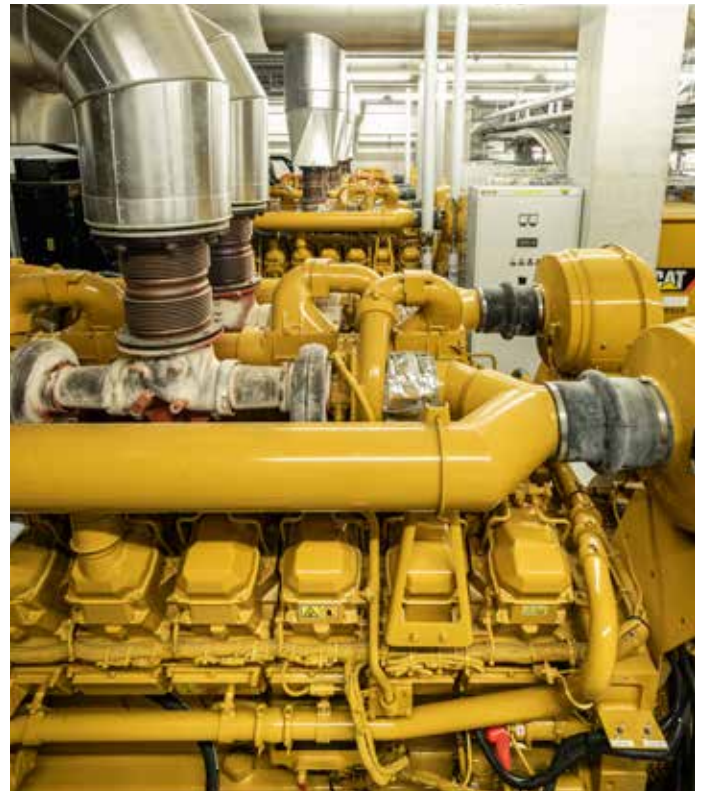
### Address and contact

#### Zurich 1 Data Center

NTT Global Data Centers Switzerland AG  
Hofwisenstrasse 56  
P.O.Box 11  
8153 Rümlang  
Switzerland

**T: +41 44 817 65 00**

**dc.emea.info@global.ntt**



All rights reserved.

The information in this data sheet contains only general descriptions which may not apply for each individual case or may change as products and services levels are adapted to new technological development. The required service elements are only binding when explicitly stated in a service contract. Technical specifications may be subject to alterations.